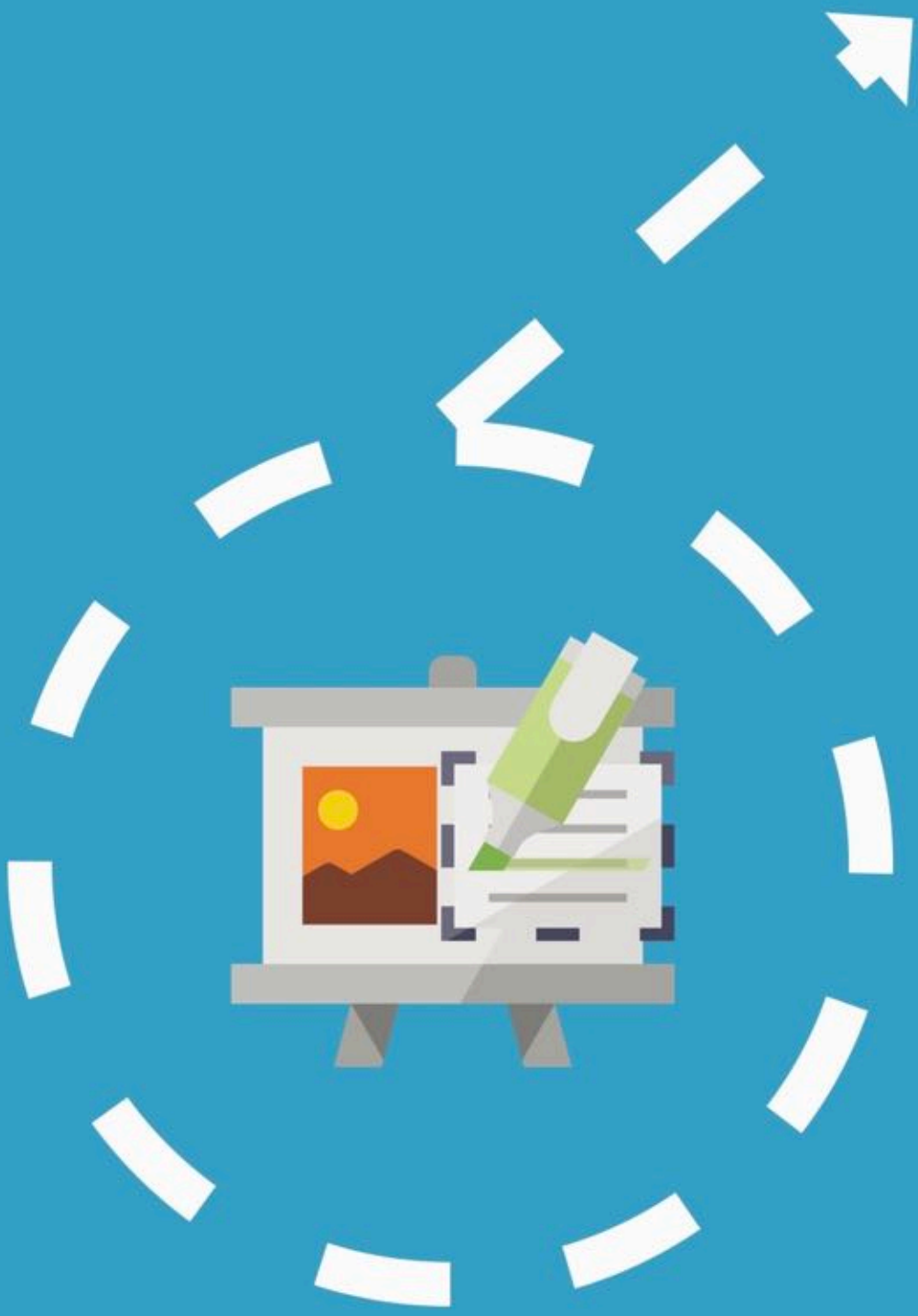


Meet Orion Markup

A simpler way to make image notes and annotations



Mac Edition User Guide

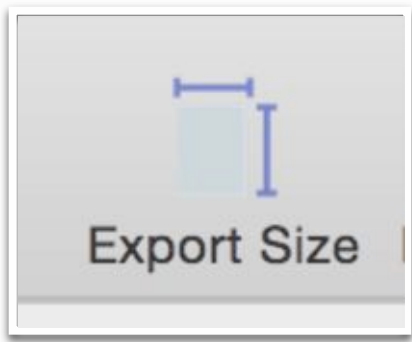
Jan 20, 2017

Table of Contents

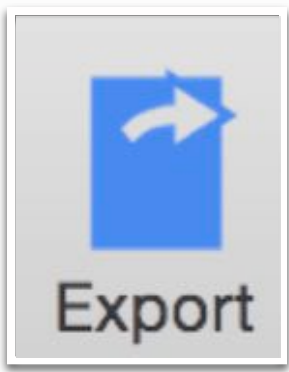
Editor Overview	3
How to add image	4
How to add zoom bubbles	5
How to update text color	6
How to add outline	7
How to update outline color	8

Editor Overview

Adjust canvas size



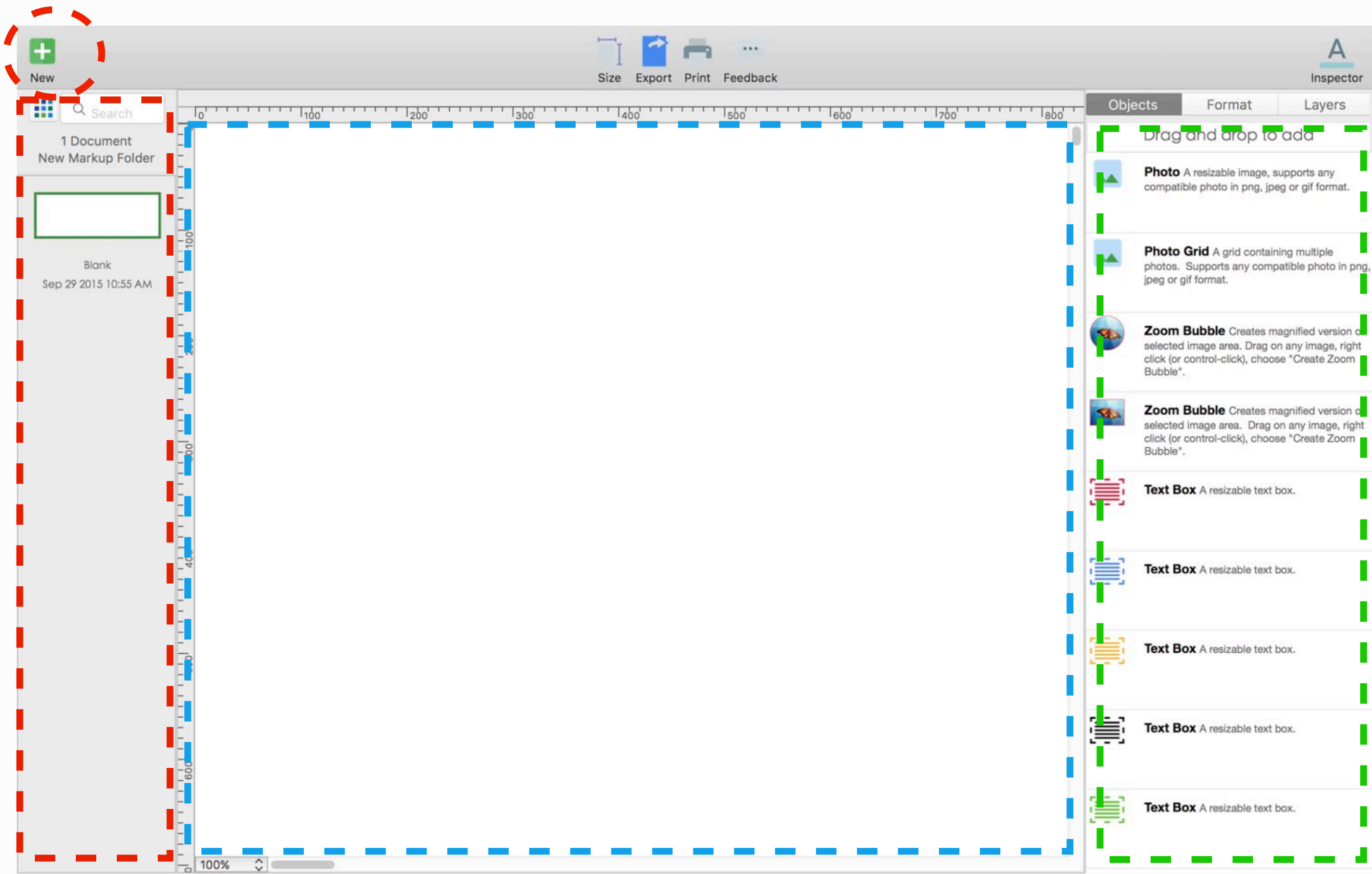
Export and share your design in PDF, JPEG, PNG. Integrated options for sharing on Twitter, Facebook, Email, Messages and Air Drop



Inspector
Expands and collapses style option side panel



Open up a new canvas



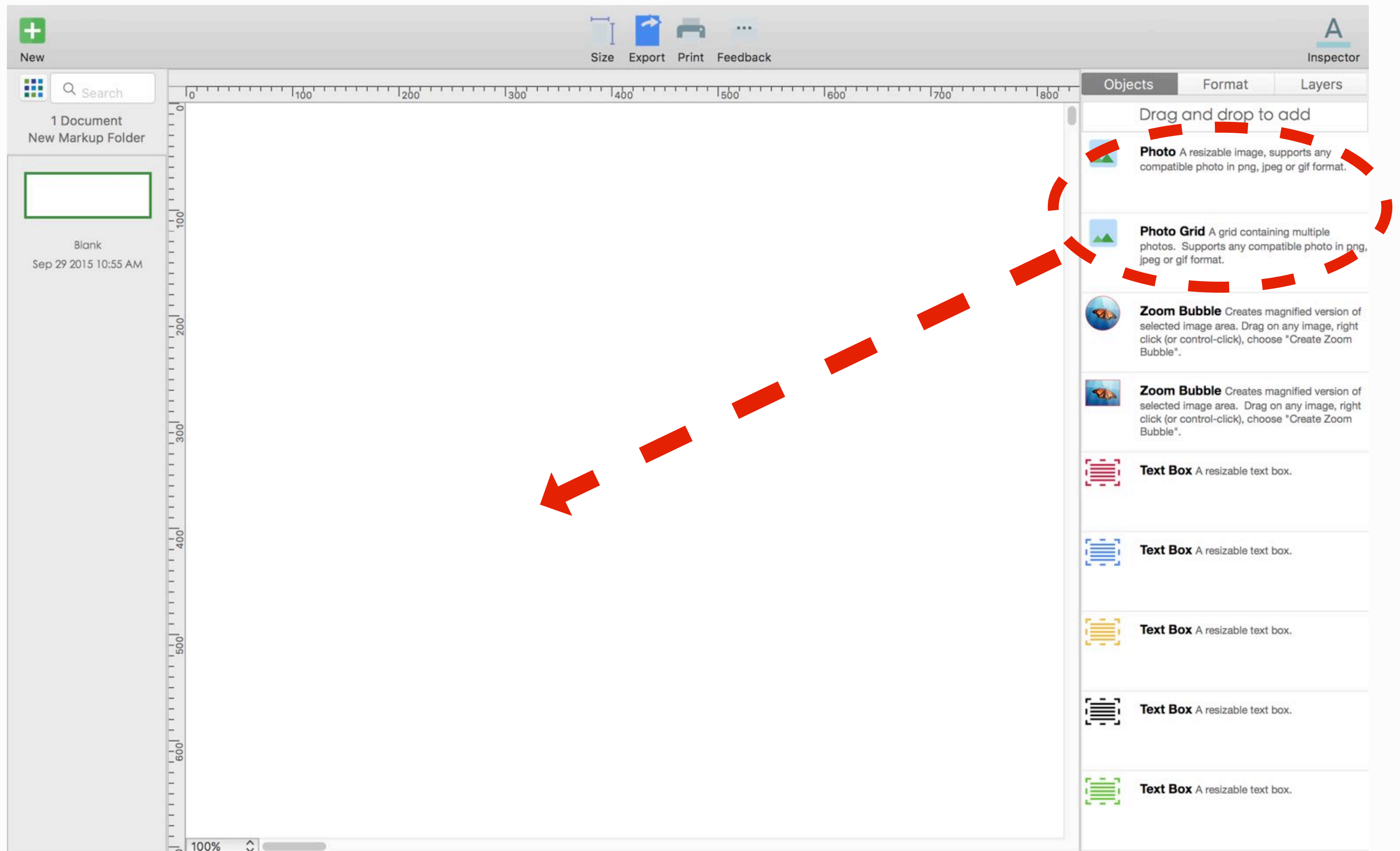
Listing panel. Lists all the designs saved in the folder.

Main design canvas. Supports drag and drop, object resize. Right click (control-click) on objects for alignment, grouping and locking options.

Inspector Side Panel:
Controls "New Objects", "Format" and "Layers".

Object - drag and drop to new objects
Format - style colors, font, lines and borders
Layers - lists all available layers on the canvas

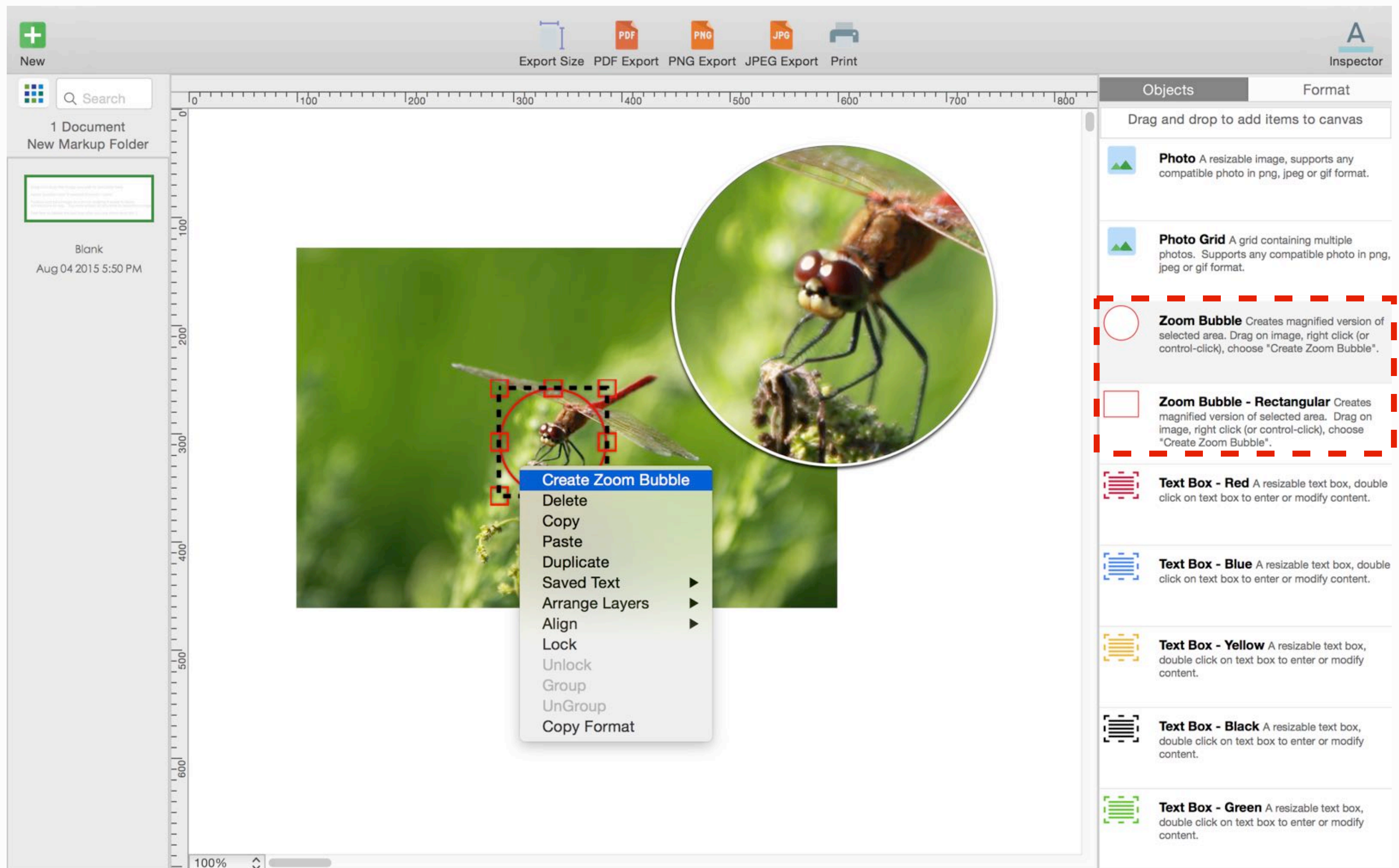
How to add image



There are different options for adding images:

1. Drag and drop the "Photo" item from side panel to canvas
2. Drag and drop any photo from Finder directly to the canvas
3. Copy and paste photos from other apps directly into canvas

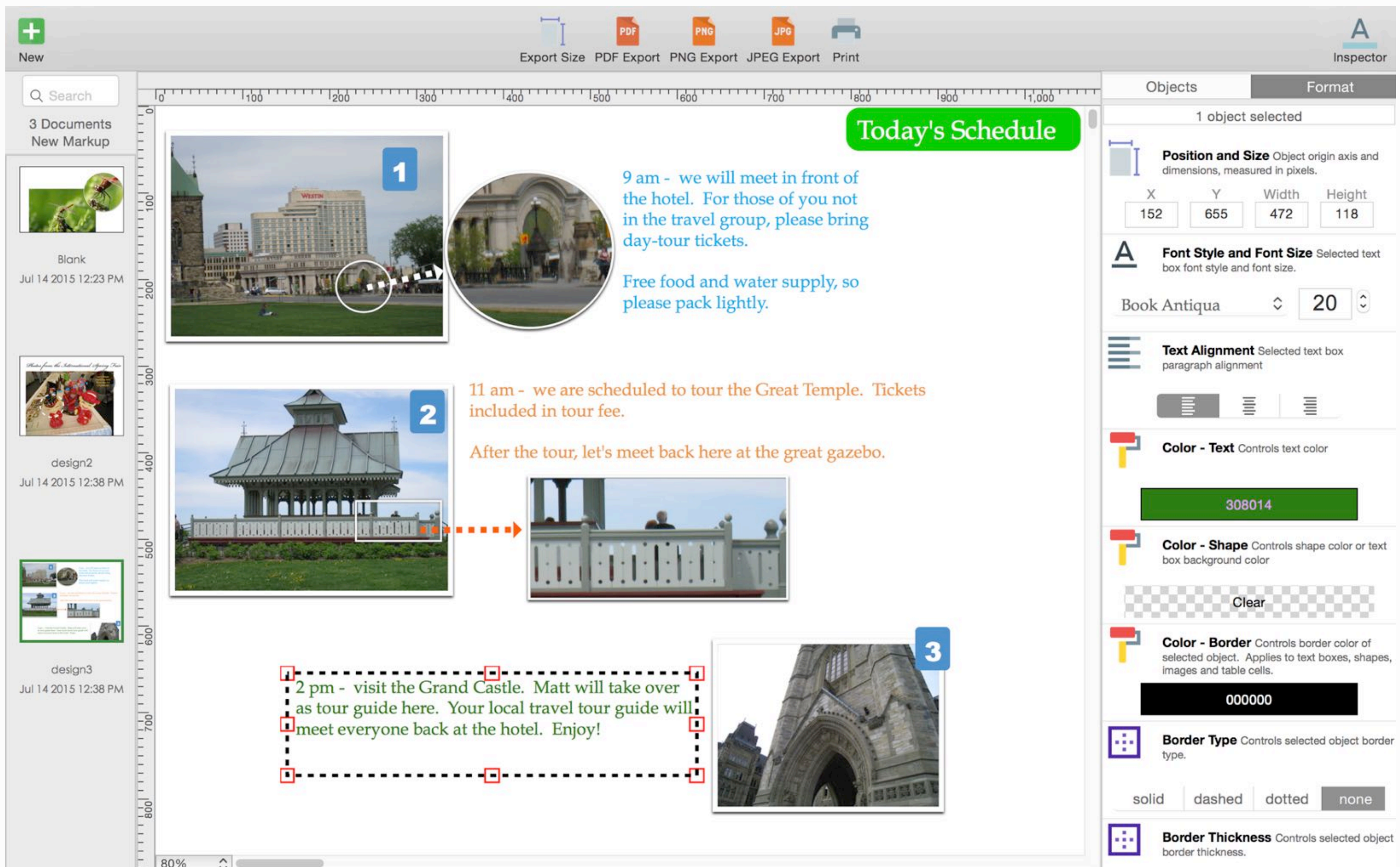
How to add zoom bubbles



Zoom bubble : creates a magnified version of image area selected

- 1. Open Inspector side panel**
- 2. Choose "Objects" tab (this is the default tab)**
- 3. Drag and drop "Zoom Bubble" on top of image**
- 4. Move bubble outline top of image area you wish to zoom-in**
- 5. Select bubble (highlight with red border), right click (or control-click)**
- 6. Choose "Create Zoom Bubble"**

How to update text color



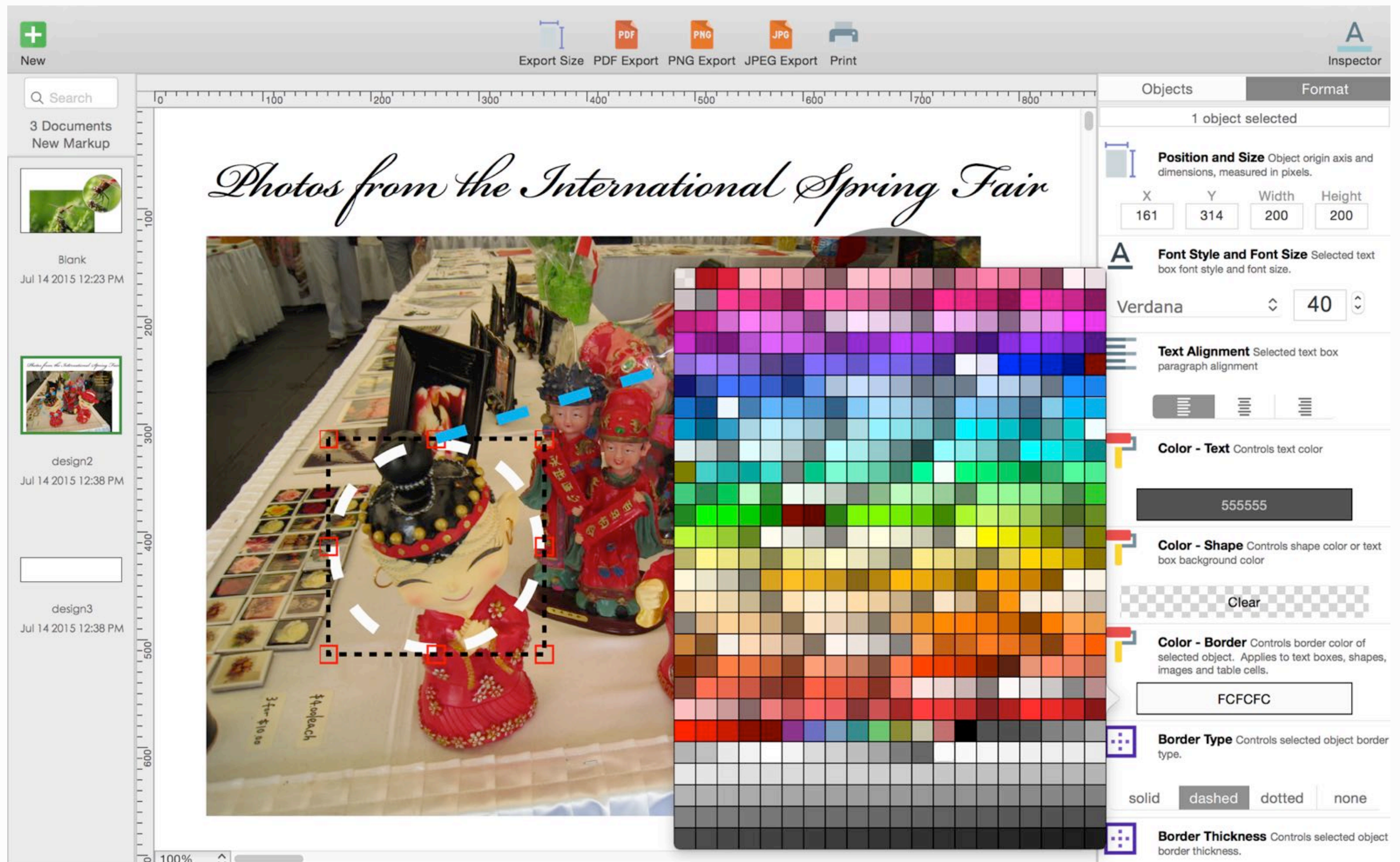
1. Open Inspector side panel
2. Choose "Format" tab (this is the second tab, located beside "Objects")
3. Select text box you wish to update
4. Choose "Color - Text", select new color

How to add outline



1. Open Inspector side panel
2. Choose "Objects" tab (this is the default tab)
3. Drag and drop any of the "Outline" objects onto the canvas

How to update outline color



1. Open Inspector side panel
2. Choose "Format" tab (this is the second tab, located beside "Objects")
3. Select outline you wish to update
4. Choose "Color - Border", select new color